

# Waste Guide

## 2023 – 2024



July 2023						
S	M	T	W	T	F	S
						1
2	3	4	5	6	7	8
9	10	11	12	13	14	15
16	17	18	19	20	21	22
23	24	25	26	27	28	29
30	31					

August 2023						
S	M	T	W	T	F	S
		1	2	3	4	5
6	7	8	9	10	11	12
13	14	15	16	17	18	19
20	21	22	23	24	25	26
27	28	29	30	31		

September 2023						
S	M	T	W	T	F	S
					1	2
3	4	5	6	7	8	9
10	11	12	13	14	15	16
17	18	19	20	21	22	23
24	25	26	27	28	29	30

October 2023						
S	M	T	W	T	F	S
1	2	3	4	5	6	7
8	9	10	11	12	13	14
15	16	17	18	19	20	21
22	23	24	25	26	27	28
29	30	31				

November 2023						
S	M	T	W	T	F	S
			1	2	3	4
5	6	7	8	9	10	11
12	13	14	15	16	17	18
19	20	21	22	23	24	25
26	27	28	29	30		

December 2023						
S	M	T	W	T	F	S
					1	2
3	4	5	6	7	8	9
10	11	12	13	14	15	16
17	18	19	20	21	22	23
24	25	26	27	28	29	30
31						

January 2024						
S	M	T	W	T	F	S
	1	2	3	4	5	6
7	8	9	10	11	12	13
14	15	16	17	18	19	20
21	22	23	24	25	26	27
28	29	30	31			

February 2024						
S	M	T	W	T	F	S
				1	2	3
4	5	6	7	8	9	10
11	12	13	14	15	16	17
18	19	20	21	22	23	24
25	26	27	28	29		

March 2024						
S	M	T	W	T	F	S
					1	2
3	4	5	6	7	8	9
10	11	12	13	14	15	16
17	18	19	20	21	22	23
24	25	26	27	28	29	30
31						

April 2024						
S	M	T	W	T	F	S
	1	2	3	4	5	6
7	8	9	10	11	12	13
14	15	16	17	18	19	20
21	22	23	24	25	26	27
28	29	30				

May 2024						
S	M	T	W	T	F	S
			1	2	3	4
5	6	7	8	9	10	11
12	13	14	15	16	17	18
19	20	21	22	23	24	25
26	27	28	29	30	31	

June 2024						
S	M	T	W	T	F	S
						1
2	3	4	5	6	7	8
9	10	11	12	13	14	15
16	17	18	19	20	21	22
23	24	25	26	27	28	29
30						

\*Good Friday collection will be on Saturday 30 March 2024

Missed bin collections  
Cleanaway **9724 6400**

New services and repairs  
Shire of Harvey **9729 0300**

# Putting your bins out for collection

Keep at least **0.5m clear** between bins

Please do not overfill bins. Lids must be able to close.



Do not park in front of bins and keep laneways clear



Maximum weight of each bin is 70kg



Place bins out early by 6am on your collection day

## Damaged, lost or stolen bin?

Visit the Shire of Harvey website [harvey.wa.gov.au](http://harvey.wa.gov.au)

## Your Collection Day

### Monday collections

- Benger
- Brunswick Junction – including Clifton Road
- Harvey (east of railway to Highway including Weir Road)
- Howson Drive Estate
- Korijekup Heights – including Louge Road & Letto Way
- Meadow Landing
- Roelands including Raymond Road
- Wokalup

### Tuesday collections

- Australind (south of Paris Road)
- Galway Green
- Leschenault Parklands
- Riverlands
- Westgarth

### Wednesday collections

- Clifton Park
- Cookernup
- Harvey (west of railway and south of Uduc Road)
- Treendale
- Warawarrup
- Wellesley and Ridgeview Estate
- Yarloop

### Thursday collections

- Ashmere Heights
- Australind (north of Paris road)
- Australind Industrial Area
- Kingston Estate

### Friday collections

- Binningup
- Harvey (west and north of the railway including Uduc Road)
- Myalup
- Uduc

# Weekly Collection

## FOGO



Meat and bones



Garden organics



Food scraps



Cardboard and pizza boxes



### DO NOT PLACE THESE ITEMS IN YOUR FOGO BIN



Plastic bags or wrap



Clothes



General waste



Plastics and all other recyclables

# Fortnightly Collection

## Recycling



Aluminium and steel cans



Glass bottles and jars



Flattened cardboard



Plastic bottles and containers



Magazines and paper

### DO NOT PLACE THESE ITEMS IN YOUR RECYCLING BIN



Plastic bags, lids or wrap



Clothes



Nappies

**Remember:** remove lids from all bottles

## General waste



Plastic bags and packaging



Nappies and polystyrene foam



Damaged textiles



Household waste

## IMPORTANT

These dangerous items do not belong in any bin as they can cause facility and truck fires:

Batteries, electronic waste, aerosols, paint, flammables, car batteries, fluorescent lights, gas cylinders.

To find out where to dispose of your Hazardous Waste, see next page.



# Domestic Hazardous Waste Drop Off Point

Electronic and Hazardous Waste can cause harm to the environment and public health.



The following items are accepted for disposal at Stanley Road Waste Management Facility.

- Gas cylinders
- Paint
- Flammables
- Poisons
- Aerosols
- Batteries (household)
- Computers
- Mobile phones
- Globes
- Car batteries
- Fluorescent lights and tubes
- TVs and remote controls
- Electrical goods

## Stanley Road Waste Management Facility (No commercial waste accepted)

Stanley Road, Leschenault  
(off Australind bypass/Forrest Highway)

**Contact** (08) 9797 2404    [bhrc.wa.gov.au](http://bhrc.wa.gov.au)

### Opening hours

Mon to Fri 7am to 5pm  
Weekends and public holidays 8am to 5pm  
(except Good Friday, Christmas Day and New Years Day)

## Richardson Road Waste Management Facility

The following items are accepted for disposal at Richardson Road Waste Management Facility.

- Co-mingled recycling
- Cardboard
- Green waste
- Construction and demolition waste
- Waste oil
- Mattresses
- E-waste
- Bulk waste / Contaminated green waste
- Scrap metal
- Drummuster
- Vehicle/Trailer/Boat bodies
- Tyres
- Whitegoods
- Special burials and asbestos (special conditions apply)
- Wood and timber

## Richardson Road Waste Management Facility

Richardson Road, Uduc (off Forestry Road)

**Contact** 0418 461 125

### Opening hours

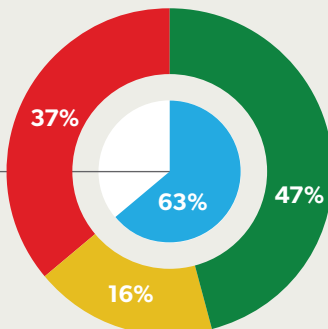
Mon to Sun 8am to 5pm  
(except Good Friday, Christmas Day and New Years Day)



Please see the Shire of Harvey website for fees and charges, or scan the QR code.

## Kerbside Collection Composition

- FOGO
- Recycling
- General Waste



In 2022, **63%** of kerbside residential waste in the Shire of Harvey was diverted from landfill.

## HAZARDOUS WASTE DOESN'T BELONG IN KERBSIDE BINS



Find out where to dispose of it, by visiting [recycleright.wa.gov.au/find-my-nearest/](http://recycleright.wa.gov.au/find-my-nearest/)

# What happens to my waste?



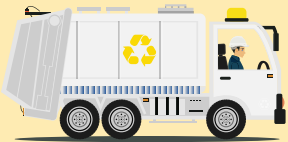
IN PARTNERSHIP WITH



## RECYCLING



Collected **fortnightly**



Sorted (by hand and machine) and baled at the Cleanaway Perth Material Recovery Facility.



Recovered materials are sent to manufacturers.



And are made into new products.



## FOGO



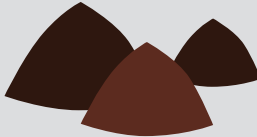
Collected **weekly**



Screened and processed at Banksia Road Organic Processing Facility.



Commercial composters combine FOGO derived material with other organic inputs.



Quality Assured soil conditioners are produced and sold in retail outlets.



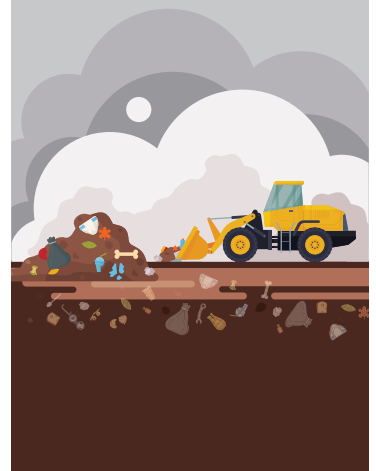
## GENERAL WASTE



Collected **fortnightly**



Waste is buried in landfill.



Methane gas is produced.



What Happens to My Waste?

# Building a Circular Economy



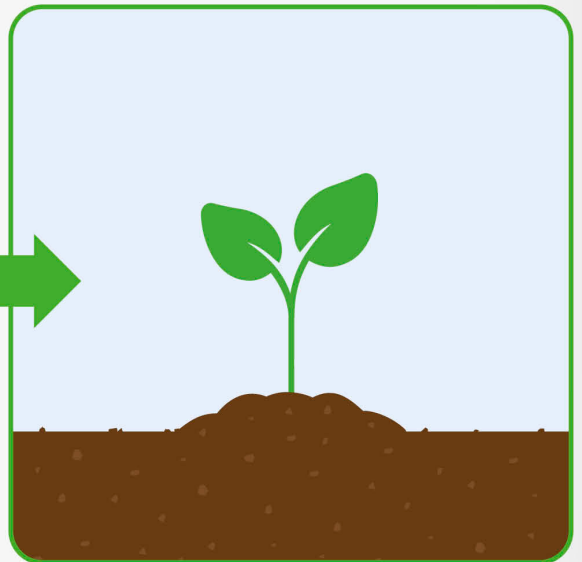
## Creating more jobs

- The Australian waste sector contributes over \$10 billion a year to the economy.
- It is estimated that for each 10,000 tonnes of waste recycled, 9.2 full time equivalent jobs are created compared to only 2.8 jobs for landfill

(Access Economics, 2009)

Waste Avoidance and Resource Recovery Strategy 2030

## Your food organics and garden organics are turned into compost.



For tips on how to produce less waste and what to do with items that don't belong in either bin, download the free Recycle Right app from the App Store or Google Play, or visit [recyclerright.wa.gov.au](http://recyclerright.wa.gov.au)



# Recycling & Disposal Guide: A – Z

PLEASE PUT IT IN THE RIGHT BIN!

- 1 Yellow-lidded Recycling bin items
- 2 Lime green-lidded FOGO bin items
- 3 Red-lidded General Waste bin
- 4 Take to drop-off centre/tip
- 5 Donate to charity



## A

- 4 Acids (HHW)
- 4 Aerosol cans (HHW)
- 1 Aluminium cans
- 1 Aluminium foil (clean)
- 2 Animal droppings
- 4 Asbestos

## B

- 3 Band aids
- 4 Batteries (HHW)
- 5 Blankets
- 3 Blister packs
- 5 Books
- 2 Bones & shells
- 3 Bread bags (plastic)
- 4 Bricks (C&D)
- 1 Broken glass
- 4 Bulky items

## C

- 1 Cardboard (boxes & other types)
- 2 Cardboard (soiled)
- 4 Car parts
- 3 Ceramics
- 4 Cleaning products (HHW)
- 3 Clothing/shoes (damaged)
- 5 Clothing/shoes (good condition)
- 3 Coffee cups
- 2 Coffee grounds
- 3 4 Coffee pods
- 4 Computer components/accessories
- 2 Cooking fat
- 2 Compostable liners

- 4 Concrete (C&D)
- 3 Cotton wool & buds
- 3 Cutlery (plastic)
- 2 Cutlery (wood/bamboo)

- ## D
- 2 Dairy products
  - 4 Dirt & soil (C&D)

- ## E
- 1 Egg cartons
  - 4 Electrical appliances
  - 1 Envelopes

- ## F
- 4 Fertiliser (HHW)
  - 2 Flowers
  - 1 Food cans (rinsed)
  - 2 Food & vegetable scraps
  - 4 Furniture (broken)
  - 5 Furniture (fixed)

- ## G
- 2 Garden organics (small prunings & plants)
  - 4 Garden organics (large)
  - 4 Gas cylinders (HHW)
  - 1 Glass bottles and jars (rinsed)

- ## H
- 2 Hair (animal & human)
  - 3 Hose (short lengths)

- ## I
- 1 Ice cream containers (cardboard & plastic)
  - 4 Insecticides (HHW)

- ## K
- 2 Kitty litter

# 3 BIN FOGO SYSTEM

For a more comprehensive list and to find your nearest local drop-off centres, visit [recycleright.wa.gov.au](http://recycleright.wa.gov.au)

- ## L
- 2 Lawn clippings
  - 4 Light bulbs/fluorescent tubes (HHW)
  - 3 Lolly bags & wrappers
  - 3 Long-life cartons

- ## M
- 1 Magazines
  - 4 Mattresses
  - 3 Meat trays (all)
  - 4 Medicines
  - 1 Metal lids
  - 1 Milk bottles & cartons (not silver lined)
  - 4 Mobile Phones
  - 4 Motor oil

- ## N
- 3 Nappies (disposable)
  - 4 Needles (medical)
  - 1 Newspapers (clean)
  - 2 Newspapers (soiled)

- ## P
- 4 Paint tins (empty or full)
  - 4 Paint (HHW)
  - 1 Paper (not shredded)
  - 2 Paper (shredded)
  - 1 Paper bags
  - 2 Paper towels & napkins
  - 1 Paper towel rolls (inner)
  - 2 Peels (citrus & fruit)
  - 3 4 Pens/Biros/Textas
  - 4 Petrol & flammable liquids (HHW)
  - 1 Pizza boxes (clean)
  - 2 Pizza boxes (soiled/oily)
  - 3 Plastic bags (empty)
  - 3 4 Plastic bottle lids
  - 1 Plastic bottles & containers
  - 4 Poison (liquid/solid) (HHW)
  - 3 4 Polystyrene
  - 3 Potato chip packets
  - 4 Printer cartridges

- ## R
- 3 Razors (disposable)
  - 3 Rope (short lengths)

- ## S
- 3 Sanitary products
  - 2 Seafood
  - 3 Soft plastics
  - 1 Steel cans (rinsed)
  - 3 Straws

- ## T
- 1 Take-away food containers (clean & empty)
  - 2 Tea bags
  - 4 Timber – treated
  - 2 Tissues
  - 3 Toothbrushes
  - 3 Toothpaste tubes
  - 3 Toys (broken)
  - 5 Toys (fixed)
  - 4 Tyres

- ## V
- 3 Vacuum cleaner dust
  - 4 Video tapes

- ## W
- 2 Weeds
  - 4 Whitegoods
  - 2 Wood (garden pruning)

- ## Y
- 1 Yoghurt containers (empty/rinsed)

**KEY:**  
**(C&D)** Construction & demolition  
**(HHW)** Household hazardous waste



recycle right

[recycleright.wa.gov.au](http://recycleright.wa.gov.au)

[harvey.wa.gov.au](http://harvey.wa.gov.au)

# A-Z Disposal Guide



**Exchange this voucher for one roll of compostable bags**

This can be exchanged at the Admin offices (Harvey and Australind), Leschenault Leisure Centre (LLC) or Harvey Recreation and Cultural Centre (HRCC). Valid between 1 July 2023 – 31 December 2023.



**Exchange this voucher for one roll of compostable bags**

This can be exchanged at the Admin offices (Harvey and Australind), Leschenault Leisure Centre (LLC) or Harvey Recreation and Cultural Centre (HRCC). Valid between 1 January 2024 – 30 June 2024.



Please remove magnet prior to recycling this calendar in your recycling or your FOGO bin!

## Contact us

### Administration Offices

#### Harvey

102 Uduc Road,  
Harvey WA 6220

#### Australind

7 Mulgara Street,  
Australind WA 6233

PO Box 500, Harvey WA 6220

### Opening hours

9am to 4pm  
Monday to Friday  
(except public holidays)

### Call

(08) 9729 0300

### Email

shire@harvey.wa.gov.au

### Visit

harvey.wa.gov.au  
watchyourwaste.wa.gov.au



SHIRE OF  
**HARVEY**



@shireofharvey



Shire of Harvey



Shire of Harvey



SHIRE OF  
**HARVEY**