

# WASTE SORTING GUIDE 2021-22

## Bin collections:

- **Yellow week** – Recycling and Food Organics Garden Organics (FOGO) bin
- **Red week** – General waste and Food Organics Garden Organics (FOGO) bin
- No collection on Good Friday (15 April) public holiday. Collection will take place on Saturday

JULY						
M	T	W	T	F	S	S
			1	2	3	4
5	6	7	8	9	10	11
12	13	14	15	16	17	18
19	20	21	22	23	24	25
26	27	28	29	30	31	

AUGUST						
M	T	W	T	F	S	S
30	31					1
2	3	4	5	6	7	8
9	10	11	12	13	14	15
16	17	18	19	20	21	22
23	24	25	26	27	28	29

SEPTEMBER						
M	T	W	T	F	S	S
		1	2	3	4	5
6	7	8	9	10	11	12
13	14	15	16	17	18	19
20	21	22	23	24	25	26
27	28	29	30			

OCTOBER						
M	T	W	T	F	S	S
				1	2	3
4	5	6	7	8	9	10
11	12	13	14	15	16	17
18	19	20	21	22	23	24
25	26	27	28	29	30	31

NOVEMBER						
M	T	W	T	F	S	S
1	2	3	4	5	6	7
8	9	10	11	12	13	14
15	16	17	18	19	20	21
22	23	24	25	26	27	28
29	30					

DECEMBER						
M	T	W	T	F	S	S
		1	2	3	4	5
6	7	8	9	10	11	12
13	14	15	16	17	18	19
20	21	22	23	24	25	26
27	28	29	30	31		

JANUARY						
M	T	W	T	F	S	S
31					1	2
3	4	5	6	7	8	9
10	11	12	13	14	15	16
17	18	19	20	21	22	23
24	25	26	27	28	29	30

FEBRUARY						
M	T	W	T	F	S	S
	1	2	3	4	5	6
7	8	9	10	11	12	13
14	15	16	17	18	19	20
21	22	23	24	25	26	27
28						

MARCH						
M	T	W	T	F	S	S
	1	2	3	4	5	6
7	8	9	10	11	12	13
14	15	16	17	18	19	20
21	22	23	24	25	26	27
28	29	30				

APRIL						
M	T	W	T	F	S	S
				1	2	3
4	5	6	7	8	9	10
11	12	13	14	15	16	17
18	19	20	21	22	23	24
25	26	27	28	29	30	

MAY						
M	T	W	T	F	S	S
30	31					1
2	3	4	5	6	7	8
9	10	11	12	13	14	15
16	17	18	19	20	21	22
23	24	25	26	27	28	29

JUNE						
M	T	W	T	F	S	S
		1	2	3	4	5
6	7	8	9	10	11	12
13	14	15	16	17	18	19
20	21	22	23	24	25	26
27	28	29	30			

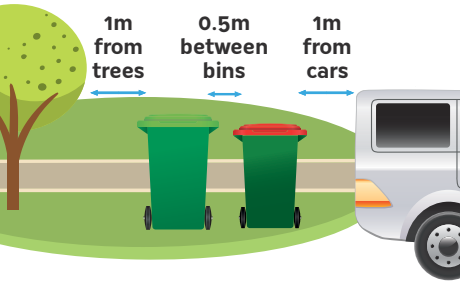
Missed collection enquiries:  
 Contact Suez Call Centre **9350 7189**  
 For broken or missing bins contact the  
 Town of East Fremantle on **9339 9339** or  
 email [admin@eastfremantle.wa.gov.au](mailto:admin@eastfremantle.wa.gov.au)



IN PARTNERSHIP WITH



# Bin Collection Map



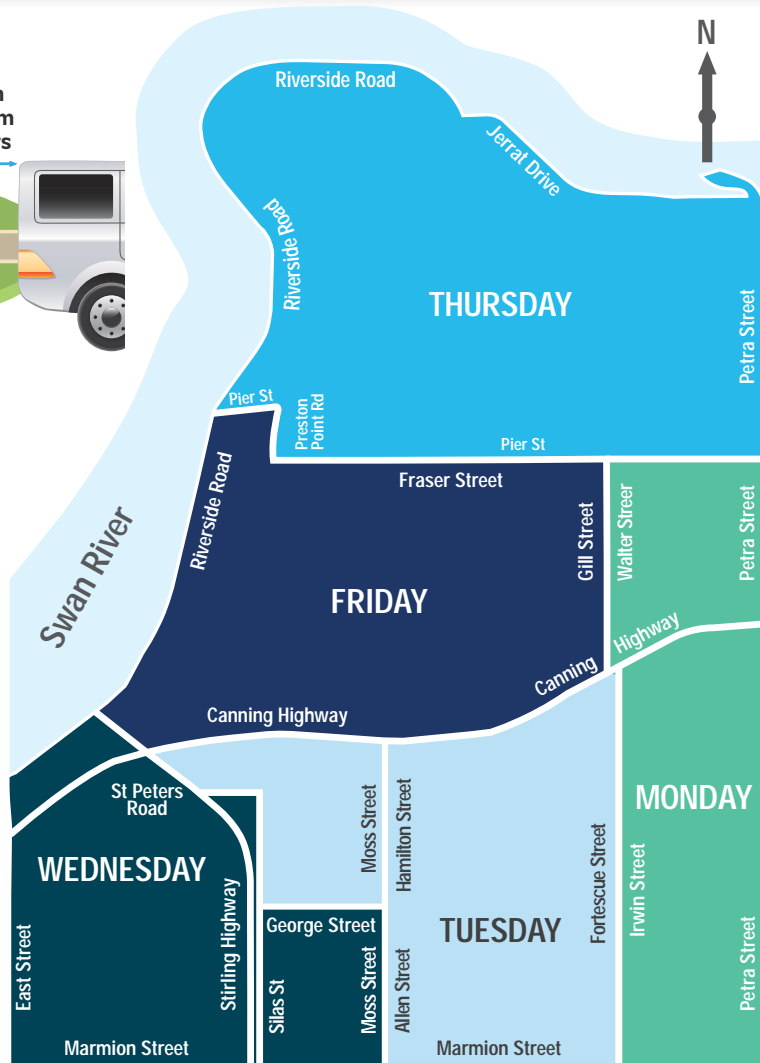
Ensure bins are placed out by 6am on collection day



Bins must weigh less than 70kg to be collected



Do not overfill your bins and ensure lids are firmly closed so items do not spill out



# Green Waste and Bulk Verge Collections

## GREEN WASTE

Please place your waste on the verge by 6am Monday of the scheduled start date as the contractor will only service your verge once.

Green Waste 1	Green Waste 2
20 September 2021	7 March 2022



### The following items **WILL** be collected:

#### Tree and shrub prunings up to

- ✓ 1.5 metres in length and 35cm in diameter
- ✓ 2 cubic metres of green waste
- ✓ Items placed loosely on the verge

### The following items **WILL NOT** be collected:

- ✗ NO leaves, lawn clippings, weeds or roots (place these in your FOGO bin)
- ✗ NO dug out lawn
- ✗ NO sand or soil materials
- ✗ NO treated wood
- ✗ NO bagged or boxed items

## BULK WASTE & WHITE GOODS

Bulk and Whitegoods/Metals

11 October 2021

### The following Items **WILL** be collected:

- ✓ Up to 2 cubic metres
- ✓ Items up to 1.5 metres in length
- ✓ General bulk waste
- ✓ Furniture
- ✓ Timber products
- ✓ Trampolines and swing sets (disassembled)

#### Place these items in separate piles:

- ✓ E-waste
- ✓ Mattresses
- ✓ White goods (fridge and freezer doors MUST be removed)

### The following Items **WILL NOT** be collected:

- ✗ NO batteries
- ✗ NO building materials: bricks, tiles, sand, cement, insulation, plasterboard, concrete, asbestos, fencing
- ✗ NO car bodies, parts or tyres
- ✗ NO food waste or domestic rubbish
- ✗ NO glass including mirrors, tables and furniture with glass panels, shower screens, plate glass, fish tanks/aquariums
- ✗ NO gas cylinders, aerosols or fire extinguishers
- ✗ NO garden organics: leaves, prunings, dug out lawns, stumps or logs
- ✗ NO paints, chemicals or oils
- ✗ NO wooden pallets

## Bin Collection Days

# Sort Your Recycling



✓ **Glass:** Beer, wine and spirit bottles, broken glass, jars, sauce and juice bottles



✓ **Steel and aluminium:** Aluminium cans, coffee and milo tins, metal jar lids, food tins, crunched aluminium foil (size of a tennis ball), metal cooking oil containers (under 5L only)



✓ **Paper and Cardboard:** Cardboard (flattened), paper (not shredded), letters and junk mail, egg cartons



✓ **Plastic (rinsed and clean):** Plastic containers from kitchen (e.g. sauce bottles) plastic containers from laundry (e.g. detergent bottles) plastic containers from bathroom (e.g. shampoo bottles), clear takeaway food containers (not polystyrene)



**Not sure where your waste goes?** Download the Recycle Right app or refer to the A-Z Guide on the inside back cover.



**Ensure all recyclables are empty, clean, dry and loose – not in bags**

## These items don't belong in this bin:



**NO aerosol cans or gas bottles**



**NO bagged items**



**NO batteries or electronic waste (including cables)**



**NO bottle lids**



**NO ceramics (crockery)**



**NO clothing or textiles (including shoes)**



**NO dirty containers**



**NO food waste**



**NO kids toys**



**NO meat trays or packaging**



**NO medical waste (sharps, asthma puffers, pill packets)**



**NO mirrors or windows**



**NO nappies**



**NO plant pots**



**NO plastic bags or plastic liners**



**NO polystyrene**



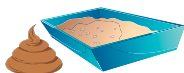
**NO ropes, cables or hose**



**NO soft plastics (chip packets, lolly wrappers and bread bags)**



# Sort your Food Organic Garden Organics (FOGO)



- ✓ Animal waste:  
Kitty litter and  
dog poo



- ✓ Compostable liners



- ✓ Dirty paper/cardboard  
(e.g. greasy pizza boxes,  
takeaway containers  
and paper bags)



- ✓ Food waste  
(Including meat,  
bones and dairy)



- ✓ Garden waste:  
Lawn clippings,  
branches, flowers,  
weeds and leaves



- ✓ Tea bags and  
coffee grounds



- ✓ Tissues, napkins  
and paper towels



- ✓ Wooden pop  
sticks, toothpicks,  
cutlery and plates

## These items don't belong in this bin:



**NO** plastic  
bags or liners



**NO** general  
waste



**NO** recyclables



**Not sure where your waste goes?** Download the Recycle Right app or refer to the A-Z Guide on the inside back cover.

## Where Can I Get Additional Compostable Liners?

Green 8L compostable liners are available at major supermarkets, Bunnings and Zero Store.



Only use the compostable liners with these symbols in your FOGO bin as other liners do not break down in the composting process. Alternatively, line your caddy with newspaper or put food waste in without a liner.



For more information, contact [admin@eastfremantle.wa.gov.au](mailto:admin@eastfremantle.wa.gov.au), call **9339 9339**, or visit [eastfremantle.wa.gov.au](http://eastfremantle.wa.gov.au)



# Sort Your General Waste



✓ All nappies



✓ All polystyrene packaging



✓ Cigarettes



✓ Baby wipes and flushable wipes



✓ Broken plates, cups and pots



✓ Coffee cups (all)



✓ Coffee pods (all)



✓ Damaged textiles (including shoes)



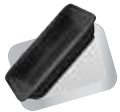
✓ Garden hose and rope



✓ Hygiene products



✓ Long life cartons (TetraPak)



✓ Meat packaging



✓ Pill packets



✓ Plant pots (all)



✓ Plastic bottle lids



✓ Plastic liners and plastic bags



✓ \*Soft plastic (e.g. Plastic bags, chip packets, wrappers and bread bags)

## These items don't belong in this bin:



**NO** aerosol cans or gas bottles



**NO** batteries or electronic waste



**NO** food waste



**NO** garden waste



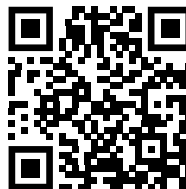
**NO** medical waste (sharps, asthma puffers)



**NO** recyclables



\*Take all your soft plastic to REDcycle bins at major supermarkets for recycling. For more information visit [redcycle.net.au](http://redcycle.net.au)



**Not sure where your waste goes?**

Download the Recycle Right app or refer to the A-Z Guide on the inside back cover.

# Household Hazardous Waste (HHW)

You can now drop off hazardous waste items that can't be disposed of in household bins at the City of Fremantle Recycling Centre. This facility is open to everyone, not just East Fremantle and Fremantle residents, and is free to use.

Limits of up to 20kg or 20 litres per item for households only.

Items accepted include:



Acids and alkalis



Aerosols and spray cans



Batteries



Engine coolants



Fire extinguishers (red only)



Flares



Fluorescent tubes



Gas bottles & cylinders



Household cleaners



Pesticides/herbicides



Pool chemicals



Smoke detectors



Unknown chemicals



Paint  
(limits are up to 100L and commercial operators are welcome for paint only)



Visit [fremantle.wa.gov.au/recyclingcentre](https://fremantle.wa.gov.au/recyclingcentre)

**Asbestos, Construction and Demolition (C&D) and Household Hazardous Waste (HHW)** can be disposed of for a fee at the following disposal sites:

**City of Cockburn** – Henderson Waste Recovery Park

920 Rockingham Road, Henderson – 9411 3444

**City of Rockingham** – Millar Road Landfill – Millar Road West – 9528 8550

These sites also accept HHW limits of up to 20kg or 20 litres per item for households only



This project is supported by the Government of Western Australia and administered by the Waste Authority



## General Waste and Disposal Sites

# Fremantle Recycling Centre

Access to the Fremantle Recycling Centre is free to all Town of East Fremantle residents. Simply present:

- your photo ID showing your residential address
- a rates notice or a bill
- a recycling letter (for drop off of unrecyclable bulky waste only)

**Commercial business quantities are not accepted.**

## Drop off the following for free:



Blocks, bricks  
& pavers  
(clean &  
unbroken)



Cardboard



Clean green waste  
(up to 1.5m in length &  
30cm in diameter, one  
6x4 trailer load per day)



Clothing,  
shoes & bags  
(good condition)



Electronic  
waste



Mobile  
phones



Motor oil  
(up to 20L)



Polystyrene



Printer  
cartridges



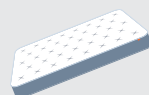
Yellow-lidded  
bin recyclables



Whitegoods  
& scrap metal



Tyres



Mattresses and  
mattress bases

## Fees apply:

## Fremantle Recycling Centre

Montreal Street, Fremantle

Friday 12pm – 4pm

Saturday and Sunday 8am – 4pm

Closed public holidays

## Reuse Shop

Saturday and Sunday 8am – 4pm



SCAN ME

For a list of acceptable items  
or fees for the Fremantle  
Recycling Centre visit  
**fremantle.wa.gov.au/  
recyclingcentre**



## Not sure where your waste goes?

Download the Recycle Right app, or  
refer to the A-Z Guide on page 10.



# Containers for Change

Whether you're keen to earn a bit of extra cash, raise money for your local sports club or even donate to your favourite charity, you can start earning 10 cents for every eligible drink container collected.

Return your eligible containers to the Fremantle Containers for Change, or any other Container for Change facility and help raise funds for the East Fremantle community.



## Items we accept



## Excluded containers



Remember to rinse and take the lids off!

Acceptable beverage containers include most aluminium, glass, plastic, steel and liquid paper board between 150ml and 3 litres.

### Fremantle Containers for Change

83 Knutsford Street, Fremantle

#### Opening hours:

Closed public holidays. Hours are subject to change.

Please visit [fremantle.wa.gov.au/containersforchange](https://fremantle.wa.gov.au/containersforchange) for more information



For more information and other locations to return visit [containersforchange.com.au/wa/](https://containersforchange.com.au/wa/)

## Fremantle Recycle Centre and Containers for Change

# A-Z Guide and Recycle Right Information

For a more comprehensive list and to find your nearest local drop-off centres, visit [recycleright.wa.gov.au](http://recycleright.wa.gov.au), or download the free Recycle Right app from the App store or Google Play.

1	Yellow-lidded Recycling bin items
2	Lime green-lidded FOGO bin items
3	Red-lidded General Waste bin items
4	Take to drop-off centres
5	Bulk waste verge collection
6	Bulk garden organic verge collection
7	REDcycle collection bin at supermarkets
8	Donate to charity



For disposal locations for hazardous household waste (HHW) and construction & demolition (C&D), please refer to page 7 – General Waste & Disposal Sites

## A

4	Acids (HHW)
4	Aerosol cans (HHW)
1	Aluminium cans
1	Aluminium foil (clean)
2	Animal droppings
4	Asbestos

## B

3	Band aids
4	Batteries (HHW)
8	Blankets
3	Blister packs
8	Books
2	Bones & shells
3/7	Bread bags (plastic)
4	Bricks & pavers (C&D)
1	Broken glass
5	Bulky items

## 2

1	Food cans (rinsed)
2	Food & vegetable scraps
5	Furniture (broken)
8	Furniture (fixed)

## G

2	Garden organics (small prunings & plants)
6	Garden organics (large)
4	Gas cylinders (HHW)
1	Glass bottles and jars (rinsed)

## H

2	Hair (animal & human)
3	Hose (short lengths)

## I

1	Ice cream containers (cardboard & plastic)
4	Insecticides (HHW)

## 2

3/4	Pens/Biros/Textas
4	Petrol & flammable liquids (HHW)
1	Pizza boxes (clean)
2	Pizza boxes (soiled/oily)
3/7	Plastic bags (empty)
3/4	Plastic bottle lids
1	Plastic bottles & containers
4	Poison (liquid/solid) (HHW)
3/4	Polystyrene
3/7	Potato chip packets
4	Printer cartridges

## R

3	Razors (disposable)
3	Rope (short lengths)

## S

3	Sanitary products
---	-------------------

## C

1	Cardboard (boxes & other types)
2	Cardboard (soiled)
4	Car parts
3	Ceramics
4	Cleaning products (HHW)
3	Clothing/shoes (damaged)
8	Clothing/shoes (good condition)
3	Coffee cups
2	Coffee grounds
3/4	Coffee pods
4	Computer components/ accessories
2	Cooking fat
2	Compostable liners
4	Concrete (C&D)
3	Cotton wool & buds
3	Cutlery (plastic)
2	Cutlery (wood/bamboo)

## D

2	Dairy products
4	Dirt & soil (C&D)

## E

1	Egg cartons
4/5	Electrical appliances
1	Envelopes

## F

4	Fertiliser (HHW)
---	------------------

## K

2	Kitty litter
---	--------------

## L

2	Lawn clippings
4	Light bulbs/fluorescent tubes (HHW)
3/7	Lolly bags & wrappers
3	Long-life cartons

## M

1	Magazines
4/5	Mattresses
3	Meat trays (all)
4	Medicines
1	Metal lids
1	Milk bottles & cartons (not silver lined)
4	Mobile Phones
4	Motor oil

## N

3	Nappies (disposable)
4	Needles & sharps – visit <a href="http://safesharps.org">safesharps.org</a> for needle exchange program or check with your chemist
1	Newspapers (clean)
2	Newspapers (soiled)

## P

4	Paint tins (empty or full)
4	Paint (HHW)
1	Paper (not shredded)
2	Paper (shredded)
1	Paper bags
2	Paper towels & napkins
1	Paper towel rolls (inner)

## 2

3/7	Seafood
3/7	Soft plastics
1	Steel cans (rinsed)
3	Straws

## T

1	Take-away food containers (clean & empty)
2	Tea bags
4	Timber – treated
2	Tissues
3	Toothbrushes
3	Toothpaste tubes
3	Toys (broken)
4	Toys (fixed)
4	Tyres

## V

3	Vacuum cleaner dust
5	Video tapes

## W

2	Weeds
5	Whitegoods
2	Wood (garden pruning)

## X

4	X-rays – West Metro Recycling Centre cnr Brockway Rd, 60 Lemnos St, Shenton Park WA 6008
---	--

## Y

1	Yoghurt containers (empty/rinsed)
---	-----------------------------------

Please remove the magnets before placing this calendar into your recycling bin.

Magnets can be reused or disposed of by placing into your general waste bin.



TOWN *of*  
**EAST FREMANTLE**

Tel: 9339 9339

Fax: 9339 3399

Email: [admin@eastfremantle.wa.gov.au](mailto:admin@eastfremantle.wa.gov.au)  
[eastfremantle.wa.gov.au](http://eastfremantle.wa.gov.au)

### Which bin do I put it in?

Visit **[recycleright.wa.gov.au](http://recycleright.wa.gov.au)**, or download the free Recycle Right app from your app store.



**[recycleright.wa.gov.au](http://recycleright.wa.gov.au)**

Email: [info@recycleright.wa.gov.au](mailto:info@recycleright.wa.gov.au)